

Historic Walking Tour

Downtown St. Helena, California

50 Historic Sites • Self-Guided • Free

*Explore the buildings, the builders,
and the stories that shaped Napa Valley's most charming town.*

St. Helena Historical Society
sthelenahistory.org/walking-tour

About This Tour

Downtown St. Helena contains one of the finest concentrations of late nineteenth-century commercial architecture in the Napa Valley. This self-guided walking tour introduces you to 50 historic buildings — the people who built them, the businesses they housed, and the events that shaped this remarkable town.

Start anywhere. Each stop stands on its own. There is no required order, though the numbering follows a logical route through downtown.

Take your time. The full tour covers about a mile on mostly flat terrain. Allow 1–2 hours for a relaxed walk with reading time at each stop.

Printed maps. Additional printed maps are available at the Heritage Center, open the first Saturday of every month.

Interactive map. Visit sthelenahistory.org/walking-tour for the interactive online map with photos and full histories for every stop.

Contribute. Know a building we missed, or have a correction? Contact us at sthelenahistory.org/contact — we'd love to hear from you.

Quick Reference

Stop	Building	Address	Built
1	Kibbler Building	1422 to 1428 Main Street	1886
2	Daniel Otis Hunt Building	1302 to 1308 Main Street and 1118-1120 (Completed March 1892)	1890
3	1310 Main Street	1310 Main Street	c. 1875
4	1312-1314 Main Street	1312 to 1314 Main Street	c. 1920
5	1316 Main Street	1316 Main Street	c. 1920
6	Traub/Keller Building	1320 Main Street	c. 1915
7	1328 Main Street	1328 Main Street	1900
8	Cameo Cinema Building	1332 to 1342 Main Street	c. 1925
9	1346 Main Street	1346 Main Street	c. 1875
10	Odd Fellows Building	1350 to 1354 Main Street	1885
11	Kettlewell Building (Kettlewell-Vasconi Building)	1379 to 1381 Main Street	1884
12	1371-1375 Main Street	1371 to 1375 Main Street	1890
13	1367 Main Street	1367 Main Street	c. 1888
14	1357-1359 Main Street	1357-1359 Main Street	1936
15	Bank of St. Helena Building	1351 Main Street	1890
16	Owen Wade Building	1347 Main Street	1890

Stop	Building	Address	Built
17	1339-1341 Main Street	1339 to 1341 Main Street	c. 1875
18	1313-1317 Main Street	1313 to 1317 Main Street	c. 1875
19	Hotel St. Helena	1305 to 1309 Main Street	1881
20	Goodman Building - Main Street Square	1269 to 1299 Main Street	1911
21	Carver Block (D. B. Carver Building)	1235 to 1239 Main Street	c. 1880
22	1225-1227 Main Street and 1231 Main Street	1231 Main Street	1875
23	1219 Main Street	1219 Main Street	c. 1875 / c. 1905
24	Goodman Building	1201 Main Street	1890
25	Electroliers	Main Street (from Sulphur Creek to York Creek)	1913-1914
26	1228 Spring Street	1228 Spring Street	—
27	1314 Spring Street	1314 Spring Street	1883
28	1313 Spring Street	1313 Spring Street	1915
29	1310 Oak Avenue	1310 Oak Avenue	1905
30	1420 Spring Street	1420 Spring Street	—
31	1255 Oak Avenue	1255 Oak Avenue	—
32	1225 – 1229 Adams Street	1225 – 1229 Adams Street	1920
33	1310 Adams Street	1310 Adams Street	—
34	1325 Adams Street	1325 Adams Street	1932
35	1360 Oak Avenue	1360 Oak Avenue	1908
36	Alila Napa Valley (formerly Las Alcobas, St. Gothard's)	1915 Main Street	1907
37	1291 Madrona Avenue	1291 Madrona Avenue	—
38	St. Helena Post Office	1461 Main Street	1941
39	Gott's Roadside (formerly Taylor's Refresher)	933 Main Street	1949
40	1401 Grayson Avenue	1401 Grayson Avenue	—
41	Farmstead at Long Meadow Ranch (formerly James W. May's Great Home)	768 Main Street	1875
42	1050 Charter Oak	1050 Charter Oak	—
43	835 Charter Oak Avenue	835 Charter Oak Avenue	—
44	1216 Church Street	1216 Church Street	1878
45	1327 Railroad Avenue	1327 Railroad Avenue	1875
46	1345 Railroad Avenue	1345 Railroad Avenue	1884
47	Scout Hall, Railroad Avenue	Scout Hall, Railroad Avenue	—
48	1500 Railroad Avenue	1500 Railroad Avenue	—
49	1468 Railroad Avenue	1468 Railroad Avenue	—
50	1104 Adams Street	1104 Adams Street	1906

Stop 1**Kibbler Building**

1422 to 1428 Main Street · Built 1886



William T. Kibbler built this structure in 1886. He had been a clerk at the Wonderful Drug Store, but he eventually moved to San Francisco. A later owner was John...

William T. Kibbler built this structure in 1886. He had been a clerk at the Wonderful Drug Store, but he eventually moved to San Francisco. A later owner was John Stewart Noble, who, after immigrating to the U.S. in 1869, and while touring the country in 1875, took a side trip to the Napa Valley. Although he was a tailor, he decided to become an undertaker and make more money. Unfortunately, he suffered a severe attack of blood poisoning from embalming chemicals. While recovering, he moved to St. Helena in 1891 and, after purchasing a local undertaking business, he built the Noble building at 1200 Main Street. In 1906, Noble traded his home and his business for property in Chicago, which turned out to be an unfortunate decision. Lawsuits over the business deal sadly resulted in his divorce. Noble moved back to St. Helena and opened another furniture/undertaking business, this time in the Kibbler Building. His second marriage to Emma Mooney, widow of F. T. Mooney, was short-lived since he was once again stricken with blood poisoning and died in 1923. The left photo shows the building as a hardware store decked out for July 4, 1916. The first floor was a Safeway store from 1928 until about 1950. It then housed an appliance store and a small restaurant. For many years the second floor was residential apartments and has also housed several hotels. It is currently the Wydown Hotel upstairs, with Centerpiece Floral & Home and La Boheme Home Décor at street level.

Stop 2**Daniel Otis Hunt Building**

1302 to 1308 Main Street and 1118 Hunt Avenue · Built 1891 (completed March 1892)



The Daniel Otis Hunt Building was completed in March of 1892. The Wonderful Drug Store was the first lessee and the most colorful occupant. It remained on this corner for...

The Daniel Otis Hunt Building was completed in March of 1892. The Wonderful Drug Store was the first lessee and the most colorful occupant. It remained on this corner for over 50 years. Owner George A. Riggins' initials (GAR) and the name of his store are embedded into the sidewalk in brass letters. Some thought GAR stood for Grand Army of the Republic, a fraternal organization composed of veterans of the Union Army of the Civil War. This would not have been popular with the Southern sympathizers in St Helena. Later the Arighi Drug Co., the Vasconi Pharmacy, and several clothing stores occupied the space. The tavern space was at different times a donut shop, a deli, a shoe store and a Mexican restaurant. Upstairs was the Valley Hotel in the 1950's and the Cornerstone Hotel in the 1980's. It is now offices. This Italianate building is constructed of native pitch-face stone mostly laid in irregular rows. The storefront has been virtually unaltered since 1947. Now Reeds Women's Clothing and Cook Tavern occupy the building.

Stop 3

1310 Main Street

1310 Main Street · Built c. 1875



This single-story stucco-finished building was built in 1875. The ground floor has two entrances. The one on the left leads to the street level business. The one on the right...

This single-story stucco-finished building was built in 1875. The ground floor has two entrances. The one on the left leads to the street level business. The one on the right leads to the second story of the building next door. The parapet (a low protective wall along the edge of a roof), which lines up with the one next door, is not original. The storefront appears to date from around 1940. In the 19th and early 20th century, this building housed a saloon. In the mid-1950's, it was the Valley Coffee Shop. It is now Cook St. Helena.

Stop 4

1312-1314 Main Street

1312 to 1314 Main Street · Built c. 1920



This stucco-finished building was built circa 1920 and was remodeled circa 1947. It is actually two separate storefronts. During the 1950's, this building housed a jewelry store, a dentist's office,...

This stucco-finished building was built circa 1920 and was remodeled circa 1947. It is actually two separate storefronts. During the 1950's, this building housed a jewelry store, a dentist's office, and an attorney's office. Fideaux, a pet boutique, and Erica Bowman, an acupuncturist, now occupy the building.

Stop 5

1316 Main Street

1316 Main Street · Built c. 1920



1316 Main This single-story stucco-finished building was built in 1920. It has a stepped parapet and a plain parapet. The windows on the right appear to date from around 1947....

1316 Main This single-story stucco-finished building was built in 1920. It has a stepped parapet and a plain parapet. The windows on the right appear to date from around 1947. During the 1950's, the building housed Peter's Fountain. The building is now Wine Country Group Real Estate.

Stop 6

Traub/Keller Building

1320 Main Street · Built c. 1915



The Traub/Keller building was built in 1915. The first building on this site was a small frame building, dating from the late 1850's to the early 1860's, and was used...

The Traub/Keller building was built in 1915. The first building on this site was a small frame building, dating from the late 1850's to the early 1860's, and was used as a blacksmith shop. It was later converted to a bakery and then H. Traub expanded it into a grocery. In 1924, new owners negotiated with Traub to erect a new building that would also house the Knox Meat Market (then in another building on Main Street). The new reinforced concrete building was divided into two parts: a grocery and a meat market. In the back, there were workrooms with a large refrigerator, vats for lard production, a smokehouse for curing hams and bacon, and a sausage maker. Later the business was sold to the Kellers and in 1965, Ernie Navone, an employee since 1949, bought Keller's Meat Market. He charmed many youngsters with a hot dog or a piece of salami while their mothers shopped. It has been a restaurant but is now unoccupied.

Stop 7

1328 Main Street

1328 Main Street · Built 1900



The St. Helena Star was founded in 1874. In 1900, ground was broken for this new building. Scottish stonemason, R.H. Pithie, built the walls. When the cornerstone was laid, a...

The St. Helena Star was founded in 1874. In 1900, ground was broken for this new building. Scottish stonemason, R.H. Pithie, built the walls. When the cornerstone was laid, a box was laid into the cornerstone and MCM (1900) chiseled onto it. The owner's wife struck the stone with a mallet, declaring that it was well and truly laid. The two large arched windows were of French plate glass with an open arched entrance between them. Inside to the left was the Star office of W.A. Mackinder. The post office, with F.B. Mackinder as postmaster, was centrally located in the interior of the vestibule. Back in the early days, herds of animals were driven through the streets. One day a steer bounded into the newspaper office through an open door. With great care, the staff managed to herd him back into the street. In 2006-2007, the building was renovated and became the Caldwell Snyder Art Gallery.

Stop 8

Cameo Cinema Building

1332 to 1342 Main Street · Built c. 1925



First Theater: Turner Hall, ca 1912 The first Goodman & Galewsky (G & G) Theater was housed in Turner Hall where Lyman Park is now. In 1913, the St. Helena...

First Theater: Turner Hall, ca 1912 The first Goodman & Galewsky (G & G) Theater was housed in Turner Hall where Lyman Park is now. In 1913, the St. Helena Star announced the opening of F.T. Mooney's new business building further south on Main Street. It was built of reinforced concrete with a frontage of 78 feet by 120 feet deep and was designed for theater purposes. The original theater boasted 400 seats and 150 opera chairs, a modern stage, and 2 standing sets. Goodman & Galewsky leased the theater and it was open every evening. In 1915, it was renamed the Liberty Theater and its first film was D.W. Griffith's epic *Birth of a Nation*. Showings of many other Griffith films were so successful that the 5-cent ticket price expanded to 10 cents, thus ending the era of the Nickelodeon Movie Theater in St. Helena. Over the years, successive owners have renamed the theater as the Roxy and then the Liberty again. In 1996, when Charlotte Wagner took over the lease, she performed a serious upgrade to the facilities and the equipment. She renamed it the Cameo Cinema. When Cathy Buck assumed the lease in 2008, the Cameo entered the 21st century. It now offers a state of the art digital projection system and the Dolby Atmos sound system, providing a world-class movie experience for its patrons. The Cameo Cinema is one of the oldest continuously running single screen theaters in the United States. On either side of the original theater was a room available for other businesses. There are now four storefronts occupying this wide building. Over the years, occupants have been an electric company, a real estate and insurance broker, a bank, a telegraph office and a grocery store. Now Daisy Clothing Boutique, Yvonne Rich Real Estate, Patina Fine Jewelry, and St. Helena Real Estate occupy the four storefronts.

Stop 9

1346 Main Street

1346 Main Street · Built c. 1875



This single-story gabled roof building was built in 1876. The awning obscures much of the stuccoed parapet wall and all of a clerestory band of windows, built above eye level...

This single-story gabled roof building was built in 1876. The awning obscures much of the stuccoed parapet wall and all of a clerestory band of windows, built above eye level as to admit light and/or fresh air. A new front door was added about 1960. This building housed The Elite Saloon through much of its early life. It is now St. Helena Real Estate.

Stop 10

Odd Fellows Building

1350 to 1354 Main Street · Built 1885



This 2-story Italianate building was built in 1885. It has a brick. It has a brick façade and side and rear walls of randomly coursed stone. This building was designed...

This 2-story Italianate building was built in 1885. It has a brick façade and side and rear walls of randomly coursed stone. This building was designed by San Francisco architect, Albert Schropfer, and built by George Kennedy for a cost of about \$20,000. The front is combined pressed brick, iron and terra cotta with a roof of heavy tin. The St. Helena Star reported, “the building is as nearly fireproof as can be built.” The three linked ovals on the pediment of the building stand for the I.O.O.F. motto “Friendship, Love, and Truth.” The St. Helena International Order of Oddfellows (IOOF) Lodge was organized in 1870, with seven charter members: three farmers, two physicians, a viticulturist, and a cabinetmaker/undertaker. By 1879, there were almost 90 members, enough to allow them to buy the property on Main Street for a new lodge. The ground floor was split into 2 sections, with the St. Helena Star as one of the first occupants, sharing it with the St. Helena Library Association and Free Reading Room. Eventually, Steves Hardware & Housewares (now located next door) occupied the lower floor. Upstairs, the first renter was a dentist. Today’s tenants are AERena Art Gallery and Martin Showroom. The Oddfellows Lodge has occupied the upstairs for over 130 years

Stop 11

Kettlewell Building (Kettlewell-Vasconi Building)

1379 to 1381 Main Street · Built 1884



Joseph Kettlewell was a skilled blacksmith who arrived here in 1872 and began to establish a business. In 1884, Kettlewell and his son built the present day brick building. It...

Joseph Kettlewell was a skilled blacksmith who arrived here in 1872 and began to establish a business. In 1884, Kettlewell and his son built the present day brick building. It included a general merchandise store on the ground floor and doctors' offices above. The Kettlewell building became the largest 19th-century commercial building on Main Street. Other businesses have since occupied this building. In 1905, G.W. Schmidt had a general store and farm implements line. A furniture store and an electrical supply store have also occupied the space. Doctors' and dentists' offices were located upstairs. In 1967, the Vasconi family renovated the building and they are still in business here today.

Stop 12

1371-1375 Main Street

1371 to 1375 Main Street · Built 1890



The owner, Caroline Adsit, built this single-story building of native stone in 1884. When the building was finished, but empty, an “Old Clothes Ball” was held with a live band....

The owner, Caroline Adsit, built this single-story building of native stone in 1884. When the building was finished, but empty, an “Old Clothes Ball” was held with a live band. The proceeds went to the local chapter of the Native Daughters of the Golden West. This building is unusual because the stone has been dressed rather than pitch-faced and is placed in broken rows on the façade. The building’s two storefronts are similar and appear to date from about 1980. The elaborate parapet has a banded ornamental molding (cornice) and a band of small, square, tooth-like blocks called a dentil course. At one time a plumbing business and a frame shop occupied the storefronts. Now Findings, a retail shop, and Olivier Napa Valley occupy the building. 1371 Main Street St. Helena CA.

Stop 13

1367 Main Street

1367 Main Street · Built c. 1888



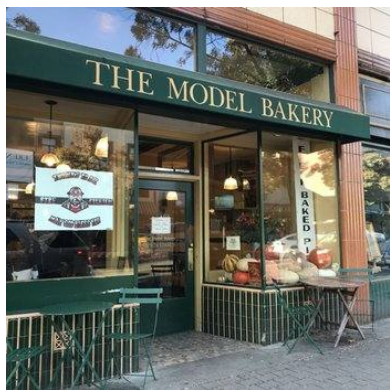
This single-story building was built in 1888. It has a brick façade topped by a flat, decorated parapet. Below it are a slightly raised cornice and dentil course with ornamental...

This single-story building was built in 1888. It has a brick façade topped by a flat, decorated parapet. Below it are a slightly raised cornice and dentil course with ornamental floral panels between the dentils. The building once housed a general merchandise store, a 5¢ & 10¢ store, and a travel agency. Now it is Woodhouse Chocolates, a shop that specializes in delicious chocolate candy. 1367 Main Street. St. Helena Ca

Stop 14

1357-1359 Main Street

1357-1359 Main Street · Built 1936



Model Bakery, 1357 Main Street Dennis Rae – 1359 Main Street This single-story building was built in 1936. It has a flat parapet topped with narrow terra cotta bands. Two businesses...

Model Bakery, 1357 Main Street Dennis Rae – 1359 Main Street This single-story building was built in 1936. It has a flat parapet topped with narrow terra cotta bands. Two businesses share the building. The building housed a bakery for many years. It has also been a yarn boutique, a shoe store, a glove company, an insurance company and a barbershop. The bakery closed in 1942, due to lack of skilled bakers during the war. In 1944, Model Bakery moved into the building. Model Bakery (1357 Main) has two entrances and Dennis Rae Fine Art (1359 Main) has the third entrance.

Stop 15

Bank of St. Helena Building

1351 Main Street · Built 1890



In 1890, Charles Greenfield built his new building on Main Street. The contract was awarded to John C. Mixon & Son. The St. Helena Star reported on July 25 that...

In 1890, Charles Greenfield built his new building on Main Street. The contract was awarded to John C. Mixon & Son. The St. Helena Star reported on July 25 that someone had stolen Frank Mixon's (John's son) foot ruler as he was working at the Greenfield project. As it was a very good quality one, he looked everywhere for it. It finally appeared in the adjoining saloon, where it had been pawned for beer. Frank paid the barkeep 50 cents and got his ruler back. Before the building sold to the Bank of St. Helena in 1905, it was occupied by a dry goods store. The original bank building, located near the intersection of Main and Spring St., needed to be replaced, so Greenfield sold them his 15-year-old building for \$10! In 1925, the Bank was sold to the Bank of Italy. It later became Bank of America. It is now The Saint, a wine bar, but the building has also housed St. Helena Olive Oil, Napa Valley Electric Co., a PG&E office, and several neighborhood bars. The fine quality of the bank safe is still evident today, as it remains on the premises by the back wall. Visitors can view the original pressed-tin decorated ceiling (now painted white) as well as the beautiful marble wainscoting with the stone walls above.

Stop 16

Owen Wade Building

1347 Main Street · Built 1890



Owen Wade built this single-story stucco-finished building in 1890. William H. Smith moved St. Helena Pharmacy into the building in 1895 and later renamed it Smith's Pharmacy. The building was...

Owen Wade built this single-story stucco-finished building in 1890. William H. Smith moved St. Helena Pharmacy into the building in 1895 and later renamed it Smith's Pharmacy. The building was a pharmacy for over 100 years. Then it became Market, a restaurant. The stucco covers the original building finish, but much of the original decorative architectural ornamentation remains intact.

Stop 17**1339-1341 Main Street**

1339 to 1341 Main Street · Built c. 1875



This single-story building was built in 1875. It has a flat parapet with a dentil course and a plain parapet wall. The building does not appear to have been altered...

This single-story building was built in 1875. It has a flat parapet with a dentil course and a plain parapet wall. The building does not appear to have been altered since the installation of the storefront around 1940. Currently, the building houses two separate businesses: Bison, a clothing store (formerly a beauty salon in the 1950's and a real estate office in the 1970's) and Palladium Fine Jewelry, (formerly a barbershop in the late 1930's through the mid-1950's and an insurance agency in the 1970's.)

Stop 18**1313-1317 Main Street**

1313 to 1317 Main Street · Built c. 1875



This single-story building was built in 1875. The stucco finish may date to the 1920's. At 1317 Main is Salon St. Helena, but it was once a florist shop in...

This single-story building was built in 1875. The stucco finish may date to the 1920's. At 1317 Main is Salon St. Helena, but it was once a florist shop in the 1950's and a Cable TV store in the late 1970's. At 1315 Main is now Main Street Books, but it was once a shoe shop in the 1930's, a news agency in the early 1950's, a jewelry store in the late 1950's, and a fashion and dress shop in the 1970's. At 1313 Main is now Gillwood's Cafe, but in the 1950's, it was a liquor and wine store, and in the late 1970's, it was a plumbing business.

Stop 19**Hotel St. Helena**

1305 to 1309 Main Street · Built 1881



Born in Sweden, Swen Alstrom traveled and worked in several hotels in San Francisco. In 1861, he bought the White Sulphur Springs Resort in St. Helena. He lived there for...

Born in Sweden, Swen Alstrom traveled and worked in several hotels in San Francisco. In 1861, he bought the White Sulphur Springs Resort in St. Helena. He lived there for 20 years, but in 1875 it burned down. He rebuilt it, but then sold it. In 1881, Alstrom built this 2-story Italianate style wood frame hotel building. It had a dining room and kitchen on the first floor and 28 rooms on the second floor. It is now called Hotel St. Helena. The hotel has been operating for 135 years! The Alstroms had 11 children. Mr. Alstrom died at age 60 in 1885. He was remembered as “generous to a fault.” The stucco finish on the front elevation was applied when the front porch was removed in 1925. The street level has housed a clothing store, a real estate and insurance firm, a newspaper, and a bank. At street level are now Kokopelli Gallery, AF Jewelers, and Brav Fashion & Perfume. Hotel St. Helena continues to occupy a lobby at street level and rooms on the top floor.

Stop 20**Goodman Building - Main Street Square**

1269 to 1299 Main Street · Built 1911



Goodman Building In 1911, Abraham Goodman built this single-story building for his Goodman & Co. department store. It is constructed of concrete block on the facade and pitch- face native...

Goodman Building In 1911, Abraham Goodman built this single-story building for his Goodman & Co. department store. It is constructed of concrete block on the facade and pitch- face native stone elsewhere. The front has a flat parapet that is stepped at each end. Beneath it are a bracketed cornice and a band of egg-and-dart molding. The awning masks a band of tall clerestory windows. The northwest wall faces a narrow sidewalk alley and is visible for its entire length. The building was once a dry good and clothing store and it now houses Padis Romance St. Helena, a jewelry and gift store. The second storefront is now available for lease, since Coldwell Banker moved to 1200 Main Street.

Stop 21

Carver Block (D. B. Carver Building)

1235 to 1239 Main Street · Built c. 1880



Carver Block D. B. Carver built this 2-story Italianate brick building in 1880 for his store. The second story was added by Carver as a meeting room for the Masonic...

Carver Block D. B. Carver built this 2-story Italianate brick building in 1880 for his store. The second story was added by Carver as a meeting room for the Masonic Lodge. Notice the different color of the brick on the second story. A wide band tops the first story with two entries. The building has been used by a variety of businesses over the years. The storefront dates from around 1990, but no second-story alterations are apparent. The entry on the right serves a retail space formerly used for a shoe store, and now available for lease. The entry on the left leads to the former Masonic Lodge space above. It is now Christopher Hill Art Gallery.

Stop 22**1225-1227 Main Street and 1231 Main Street**

1231 Main Street · Built 1875



Giugni Grocery The C. E. Davis buildings were built in 1875. Dr. Davis was born in New Jersey in 1832. Eventually he became more interested in dentistry, rather than medicine,...

Giugni Grocery The C. E. Davis buildings were built in 1875. Dr. Davis was born in New Jersey in 1832. Eventually he became more interested in dentistry, rather than medicine, so after completing his education in dentistry in Philadelphia, he moved to St. Helena in 1868, where he practiced dentistry for over 20 years. He invested his savings in real estate and, as the town grew, he prospered rapidly until he became one of the wealthiest citizens of Napa County. The property he bought with his earnings encompassed two buildings. At 1231 Main St. was the J. E. Straus store and then it became A & P Coffee. It was later converted to St. Helena Meat Market and that business remained there for 35 years. Inside the store were racks with hooks and wheels for moving sides of meat from the back door to the cooling rooms that were walk-in iceboxes. The large doors were insulated with cork. The attic spaces were filled with blocks of ice by way of small doors. Outside, in the back, was a brick smokehouse. The building had a wood ceiling and cement floors and was designed to let in natural light before there was electricity. At 1231 Main is one of the earliest brick buildings on Main Street. In 1978, the building housed the Little Dress Factory and in 1986, it became St. Helena Antiques. The building at 1225-1227 Main St. contains two storefronts of unequal width. At 1225 is Kings X Barbershop. That space has been a barbershop for many years. At 1227 Main was the Otto Behrns Grocery in the 1880's. Behrns sold to W. J. Giugni in 1911. Giugni Grocery eventually became a deli, as it is today.

Stop 23**1219 Main Street**

1219 Main Street · Built c. 1875 / c. 1905



The original building on this site was the National Hotel built in 1875. The current building is 20th Century and has a nearly symmetrical front that features a flat parapet...

The original building on this site was the National Hotel built in 1875. The current building is 20th Century and has a nearly symmetrical front that features a flat parapet and stucco finish. There are two storefront entries. The larger section to the northwest is made of stone, while the other section is wood frame. The building has housed a variety of retail businesses, including a hardware store. Pearl Wonderful Clothing, Flats, Acres, and Jan de Luz now occupy the four storefronts.

Stop 24

Goodman Building

1201 Main Street · Built 1890



Abraham Goodman was born in Hungary in 1851. In 1879, Abraham moved to St. Helena and, after his merchandise business, “The San Francisco Auction House” grew, he built these two...

Abraham Goodman was born in Hungary in 1851. In 1879, Abraham moved to St. Helena and, after his merchandise business, “The San Francisco Auction House” grew, he built these two matching brick buildings. The first was built in 1890, and the second in 1896 for his “San Francisco Dry Goods Store.” In 1891, Abraham moved back to San Francisco. His two sons, Jacob and Julius, continued to manage the dry goods store. In 1911, they moved the store to a new building at 1243 Main Street. The business eventually sold to the Rosenbergs in 1961, and then to Jack and Kathy Palus in 1981, who moved it to the Richie Block. Goodman’s has now relocated to Calistoga. Around 1928, a restaurant occupied 1205 Main Street. In 1948, it became Ray’s Place, a “working man’s bar”, and in 1987, it became and remains Ana’s Cantina. In 1927, the 1201 Main Street store was a grocery business and in 1971, a new owner did an historic restoration. Now Napa Valley Vintage Home occupies the space.

Stop 25**Electroliers**

Main Street (from Sulphur Creek to York Creek) · Built 1913-1914



Electrolier St. Helena's iconic streetlights are known as electroliers. The 1913 St. Helena Chamber of Commerce Vintage Festival Committee met and decided to investigate the cost of installing street lighting...

Electrolier St. Helena's iconic streetlights are known as electroliers. The 1913 St. Helena Chamber of Commerce Vintage Festival Committee met and decided to investigate the cost of installing street lighting from Sulphur Creek to York Creek along both sides of Main Street. The City Council agreed to the installation of 12 lights between Adams and Pine and reimbursed \$400 of the total \$1000 cost. The electroliers were installed in time to light up the pavilion for the Vintage Festival on September 6, 1913. In 1914, Napa Valley Electric Company won the bid for the installation of 37 more electroliers for \$3,108. The Vintage Festival Committee donated \$1,600 toward the cost. In 1959, PG&E made an unpopular proposal to remove the electroliers and replace them with 20,000-lumen lamps. The electroliers would be delivered to the salvage yard where people could purchase them.irate citizens vehemently opposed this plan and, when John Aquila became mayor in 1962, he led a campaign to save, restore and modernize the beloved streetlamps. The light posts were moved 24 inches farther away from the curb to keep vehicles from damaging them. New mercury vapor bulbs in the top lamp doubled their brightness. Glass globes were replaced with plastic. Aquila located a foundry and casts were made to manufacture spare electrolier parts. John Aquila was named Citizen of the Year in 1981, largely due to these efforts. The lights now use compact fluorescent spiral lights, which are more energy efficient. The city corporation yard stores old and replacement electrolier parts in case the streetlights need repairing. Modernization was achieved without giving up the unique illumination these electroliers give to our streetscape.

Stop 26**1228 Spring Street**

1228 Spring Street



St. Helena has many historical buildings that are not in the Main Street Commercial District. Some of them have been placed on the National Register of Historic Places. Some are...

St. Helena has many historical buildings that are not in the Main Street Commercial District. Some of them have been placed on the National Register of Historic Places. Some are just old buildings with a unique history. This tour will help you explore St. Helena's side streets on both the west side and east side of Main Street. Discover our historic churches, hotels, social halls, saloons, schools, libraries, and post office. Learn about our historic railroad and warehouse district. The William Tell Hotel is a unique example of 19th century false front commercial architecture in Napa County. It illustrates not only the false fronts of the 1870's, but also the uncommon stone double wall construction (without mortar) that predates the stone masonry of the 1880's and 1890's seen on St. Helena's Main Street. The original building appears to have been built in 3 sections with the earliest on the south side with the fieldstone double wall cellar. The northern section was the bar. Bernard Tosetti was the proprietor of the William Tell Saloon in 1876. Siding is shiplap as is the false front that conceals the fact that the southern section was an independent building to which the others were attached. In 1883, Battista Salmina built a 2-story addition with a dining room below and 20 sleeping rooms above. In the early 1900's, Walter Martini ran the hotel when it was a popular eating place. The original first floor has been modified and the façade has been stuccoed. The second story is still intact. A story of 1916 tells of a bar patron who fell out a second story window after a night of revelry. He was found in the morning by a passerby and had survived the incident. In 1946, the Keig family converted the building to a feed store, Napa Milling Co., and added the sheet metal extension to the rear. The building now houses several offices and businesses.

Stop 27**1314 Spring Street**

1314 Spring Street · Built 1883



Grace Church was the first stone church built in the Episcopal Diocese of Northern California. The parish, organized in 1875, held services in a variety of buildings until Grace Church...

Grace Church was the first stone church built in the Episcopal Diocese of Northern California. The parish, organized in 1875, held services in a variety of buildings until Grace Church was built. Grace Episcopal Church had obtained the lot at Spring Street and Oak Avenue in 1878. A small wooden chapel served the congregation until the stone building was completed in 1883. It was originally just the stone structure, which is the sanctuary today. Of dressed stone, the one-story sanctuary carries a high-pitched roof with its interior beams exposed. A new hall was later added and in 1971, as part of a major renovation, and a sacristy and stone bell tower were built to adjoin the church. Of particular note are the church doors of hand-carved mahogany, executed by the nationally known sculptress Marian Brackenridge, in 1970. These doors are located behind the new bell tower as one enters the sanctuary. The churchyard is defined by a stone wall built in 1892. In 2002, a campaign began to replace the church hall with a new hall (the Newton Room) and classroom building and continued on to retrofit and enlarge the church itself. This was completed in 2005 and then rededicated. The walking labyrinth was completed in 2015.

Stop 28**1313 Spring Street**

1313 Spring Street · Built 1915



Native Sons of the Golden West Parlor #53 has been active in St. Helena since 1885. Active in documenting and marking historic sites significant to Napa County and California, the...

Native Sons of the Golden West Parlor #53 has been active in St. Helena since 1885. Active in documenting and marking historic sites significant to Napa County and California, the Native Sons parlors of Napa County were responsible for the early efforts in preserving the Old Bale Mill, when it was deeded to them as a gift in 1923 from Mrs. W.W. Lyman, Sr. In 1941, the Mill was deeded to the County and is now operated by Napa County Regional Park and Open Spaces District. The Native Sons Hall was built in 1915 in the Italian Villa style becoming popular again at the turn of the century. Characteristic of the style are the two towers with their modillion brackets, low hip roofs, stucco façade and narrow semi-circular arched windows on the 2nd floor. Doorways also have the semi-circular arch. Note the shiplap siding of the two-story building; the stucco façade is original to the building. Two separate buildings were combined to create the Native Sons Hall. The front section that faces Spring Street has room for 92 people and a stairway leading up to the second floor. The back room, or pavilion, is the largest and, according to articles in the St. Helena Star in 1915, it was once an open-air skating rink and later a dance pavilion that were located elsewhere. It was moved to the Spring Street location and attached to the front edifice. This pavilion can hold 485 people. It is the largest hall in the town and is where so many of the fund-raising activities of the community have taken place in the building's 100+ years. According to the St. Helena Star on June 25, 1915, the hall was decked out in a splendor seldom seen in St. Helena for a grand opening ball. "The entire building was brilliantly illuminated and bouquets of flowers constituted simple decorations in the parlor."

Stop 29

1310 Oak Avenue

1310 Oak Avenue • Built 1905



This single story building was built circa 1905. It faces Oak Avenue but is set back on Money Way that runs parallel between Main Street and Oak Avenue. It has...

This single story building was built circa 1905. It faces Oak Avenue but is set back on Money Way that runs parallel between Main Street and Oak Avenue. It has a shed roof and low parapets on all but the southwest elevation. The construction material is a native pitch-face stone that is coursed (laid in a path) or uncoursed (random). The original metal doors are outside on the north side. On the northwest facing door there are signatures and dates and on the other door are calculations where the operator used the door like a pad of paper. Apparently, animal feed was sold out of this stone building. It now serves as Alan's Photography and Custom Framing business.

Stop 30

1420 Spring Street

1420 Spring Street



The Cumberland Presbyterian Church of St. Helena was organized in 1863 on Spring Street. In 1873, the church was damaged by a fire set by an arsonist. The following year,...

The Cumberland Presbyterian Church of St. Helena was organized in 1863 on Spring Street. In 1873, the church was damaged by a fire set by an arsonist. The following year, the church was again set alight and burned to the ground and the congregation disbanded. St. Helena Presbyterian Church was organized May 30, 1874, by the Reverend James Mitchell, claiming the same site. Services were temporarily held at the Sharon Baptist Church on Church Street. The building we see today was completed and dedicated on January 30, 1876. It has been a landmark in the community since then when the steeple of the frame Gothic style church could be seen throughout the small town. Resting on a stone foundation, the frame church originally was rectangular with a gable roof and the entry and steeple to one corner. Shiplap siding sheaths the exterior, and narrow pointed arch windows extend along the side wall. Note the hood molds of the Gothic windows. In 1875, an 880-lb bell was installed in the steeple and the dedication took place on January 30, 1876. In 1885, Westminster Hall, the lecture hall, was built perpendicular to the rear gable end of the church by local builders. In 1954, the sanctuary was renovated and in 1970, repairs were made to the church steeple, but essentially the original design fabric has been retained. In 1985, an organ from Austria replaced the church's electric Hammond organ. It arrived disassembled in crates and it took 5 craftsmen, who accompanied the organ from Austria, to erect it in the sanctuary. The St. Helena Family Center (next door) was once the pastor's residence. The First Presbyterian Church has held Sunday services for over 140 years.

Stop 31

1255 Oak Avenue

1255 Oak Avenue



The present-day Catholic Church stands on the site of the first Church of St. Helena that was the remodeled home of a Mr. Sheehan. Augustus Tainter donated the lot to...

The present-day Catholic Church stands on the site of the first Church of St. Helena that was the remodeled home of a Mr. Sheehan. Augustus Tainter donated the lot to Archbishop Alemany, first Archbishop of San Francisco, in 1865. The old frame building was later moved off the site and used by several church denominations. The St. Helena Catholic Church was built during 1889 and 1890. It is designed in the classic style of English Medieval parish churches and constructed of native stone. The entry is directly beneath the Gothic bell tower and goes directly into the nave. Notice the fine tracery in the upper bell tower window. The interior of the nave has an open timbered roof in the Jacobean tradition. In 1945, fire swept the church. In rehabilitation, buttress additions were made to the north and south sides of the bell tower and on the north and south walls. Sacristies were added to the rear of the church and the bell tower roof was replaced with a battlement. The stained glass windows survived the fire. The church exemplifies the craftsmanship in stone of Napa County's 19th and 20th-century artisans. The Catholic Church was added to the National Register of Historic Places on May 23, 1978.

Stop 32

1225 – 1229 Adams Street

1225 – 1229 Adams Street · Built 1920



Adams Street view This single-story utilitarian building was built circa 1920 and is owned by and located behind the Vasconi Pharmacy. It has a front-facing gable roof. The roof and...

Adams Street view This single-story utilitarian building was built circa 1920 and is owned by and located behind the Vasconi Pharmacy. It has a front-facing gable roof. The roof and walls are constructed of corrugated metal sheets. The front elevation has a vehicle opening on the left and a smaller doorway on the right. Each door is flanked by a window, which, like windows on other elevations, is unglazed and covered with wire screen. The building has a concrete floor and foundation. It was once a P.G. & E. warehouse. It appears to be substantially unaltered. It is currently being used as a storage facility.

Stop 33**1310 Adams Street**

1310 Adams Street



Moving the parsonage The Methodist Church is the oldest of the several 19th-century churches in St. Helena. Its simple lines exemplify the early Methodism brought to the Upper Napa Valley...

Moving the parsonage The Methodist Church is the oldest of the several 19th-century churches in St. Helena. Its simple lines exemplify the early Methodism brought to the Upper Napa Valley by the circuit Methodist minister, Rev. Asa White, in the 1850's. As the Rev. White covered a wide circuit on the North California coast, it fell to the Rev. Bryant and his trustees to build the church in 1867. F.E. Kellogg, the builder of the Bale mill, supplied the lumber. Several early pioneer names are associated with the building of the church: William McDonnell, Peter Teale, J.B. Risley, John Howell, the Rev. Bryant and others. In the functional style of early churches, it is a rectangular building with a gable roof. Siding is of shiplap. In 1873, the two-story bell tower with a steeple was added to the gable end and William Angwin was appointed the minister. By 1881, the construction debt was paid off. The steel ceiling and Gothic windows were installed in 1897. Charlotte Jones, one of the first female preachers in California, served from 1930 to 1941. In 1976, the Methodist Parsonage, that had been built at the same time adjacent to the church, was moved to 1944 Spring Street. A Sunday School and Day Care center once took its place. Now a Montessori School is located there.

Stop 34**1325 Adams Street**

1325 Adams Street · Built 1932



First schoolhouse, circa 1882 St. Helena's first public one-room schoolhouse stood on the grounds now occupied by Las Alcobas luxury hotel (formerly St. Gothard's Inn/Grandview) north of town. In 1858,...

First schoolhouse, circa 1882 St. Helena's first public one-room schoolhouse stood on the grounds now occupied by Las Alcobas luxury hotel (formerly St. Gothard's Inn/Grandview) north of town. In 1858, the school was moved to the corner of Kearney and Adams. The school was later moved to the corner of Oak and Adams. As enrollment grew, rooms were added until there were six, but they had leaky roofs and were poorly arranged. In 1901, the cornerstone of a new locally quarried stone school building was laid. It had a slate roof and was strongly built throughout. In 1920, four districts (St. Helena, Lodi, Vineland and Spring Valley) formed the St. Helena Unified Grammar School. In 1931, only 30 years after the school was built, the Grammar School was declared unsafe during earthquakes and it was torn down. The new St. Helena Elementary School was completed in 1932. The building is a rare example of the Spanish Colonial Revival style with low relief carvings highlighting the arches, columns, windows and cornices of the 1½ story building. The bell tower has a tiled hip roof and is paired with a first floor arched window. Decorative grills on the door, circular windows, and a bell tower add to the ornate quality of the style. A statue in memory of President William McKinley stands to the right of the entrance. He was assassinated in 1901. Money was raised by the citizens of St. Helena to honor the 25th president. For many years the school served Kindergarten through 6th grade. Since the Primary and Middle schools were built, the Elementary School now only serves 3rd, 4th, and 5th grades.

Stop 35

1360 Oak Avenue

1360 Oak Avenue • Built 1908



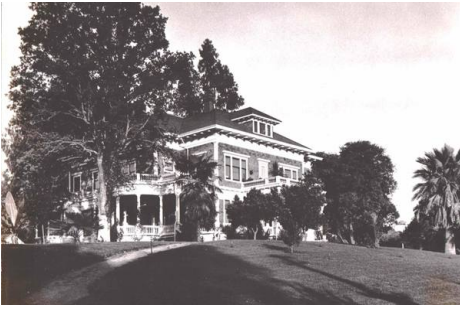
Dr. George J. and Elsie Wood Public Library The St. Helena Library was begun privately as a subscription library by the townspeople in 1875. Called the St. Helena Library Association...

Dr. George J. and Elsie Wood Public Library The St. Helena Library was begun privately as a subscription library by the townspeople in 1875. Called the St. Helena Library Association and Free Reading Room, it occupied a number of sites, including the front room of the Oddfellows (I.O.O.F.) Building on Main Street. In 1904, local citizens contacted library philanthropist, Andrew Carnegie, who eventually donated \$7,500 to construct the library building. A local bond issue for the purchase of the land and an agreement to maintain the property matched Carnegie's grant. The Carnegie Library building was built in 1908. The 2-story Mission Style building carries the characteristic curvilinear gables and semi-circular arched windows. The second story dormer windows also have a curvilinear gable. The stucco walls are plain; however, note the decorative tie-rods in front. The Carnegie Building remained St. Helena's library until 1979 when the new library facility on Library Lane was completed. Eventually, the Carnegie Building went through a much-needed earthquake retrofit. The Dr. George J. and Elsie Wood Public Library on Library Lane was completed in 1979 and then enlarged in 1996. The Napa Valley Wine Library Collection has been housed there since 1961. The Silverado Museum showcases the works and memorabilia of Robert Louis Stevenson and is adjacent to the Public Library. The Library has also worked closely with the St. Helena Historical Society, since its founding in 2002, and the Society is housed upstairs in the Library building. The Library supports the Historical Society's many efforts to preserve St. Helena's history.

Stop 36

Alila Napa Valley (formerly Las Alcobas, St. Gothard's Inn)

1915 Main Street · Built 1907



Residence St. Gothard's Inn Los Alcobas "The handsome residence being erected by Mrs. M.H. Vance and Mr. and Mrs. C.H. Anderson on the hill next to York Creek and Beringer..."

Residence St. Gothard's Inn Los Alcobas "The handsome residence being erected by Mrs. M.H. Vance and Mr. and Mrs. C.H. Anderson on the hill next to York Creek and Beringer will be ready within a few weeks. Carpenters and painters will finish what is one of the finest homes in Napa Valley." (St. Helena Star). There is much of the Georgian Revival influence in its architecture. Built in 1907, the home was turned into a hotel after only four years. In 1911, Herman Schultz, a Swiss, converted the home into St. Helena's first tourist hotel and summer resort. He named it St. Gothard's Inn, after a place in his homeland. The popular hotel sat 50 people in the dining room. World War I diminished the travel business, and in 1921, the building became a hospital with 30 beds. In 1938, it again became a hotel and restaurant, with new, successive owners. They provided luxury lodging with a vineyard view. In 1956, Christian Science Church's Grandview Community Inc. became a retirement home until 1990. It became Grandview Apts. in 1991. From 2002 until 2014 the building was offices and apartments. In June of 2014, a new project broke ground and the 107-year-old structure started undergoing extensive renovations. Opened in 2017, Las Alcobas is the centerpiece of a new Luxury Collection resort that features Acacia House by Chris Cosentino, atrio spa, and over 6000 square feet of combined event space.

Stop 37

1291 Madrona Avenue

1291 Madrona Avenue



1291 Madrona The building that now houses the American Legion Post 199, was built by the St. Helena Seventh Day Adventist Church for \$1,220 and dedicated in 1880. The pastor...

1291 Madrona The building that now houses the American Legion Post 199, was built by the St. Helena Seventh Day Adventist Church for \$1,220 and dedicated in 1880. The pastor lived in a side room that is now the Legion bar. The eastern section was used for Sunday school and separated by a wide drop-down door. By 1929, times were hard and the church met with financial difficulties when asked to pay for paving Oak Avenue and Madrona Avenue. The cost of paving and needed repairs to the building resulted in a decision to sell it to the American Legion. The Legion began a long process of repairs. Foundation jacks were used to raise the structure and replace the old growth redwood piers. During renovations, all electrical and plumbing was replaced. Some of the antique wiring hangs on the wall in the bar. The bar is a museum of military memorabilia. Hanging from the ceiling is a dummy practice bomb. A framed Japanese flag with a bullet hole in it hangs next to a Japanese rifle. War posters put out by Coors are next to a plaque commemorating St. Helenans who died in war. The Kiwanis Club holds meetings in the Legion Hall. Calvary Chapel St. Helena also meets here.

Stop 38

St. Helena Post Office

1461 Main Street · Built 1941



Carver mansion Keller mural Post Office On June 28, 1938, St. Helena citizens learned they were to become the recipients of a new federally funded post office building. Postmaster Joseph...

Carver mansion Keller mural Post Office On June 28, 1938, St. Helena citizens learned they were to become the recipients of a new federally funded post office building. Postmaster Joseph Galewsky and other officials opened the sealed bids. Dr. H.L. Byrd had submitted the accepted bid for a parcel of land located between Adams and Pine Streets, site of the historic Carver Mansion. The Morrison Mortuary and Funeral Parlor was leasing the property from Dr. Byrd. The asking price for this parcel was \$14,000. The Morrison Mortuary had to build and relocate to a new building and the existing structure, the Carver Mansion, had to be razed. The mansion had been built in the 1870's and was known as a local landmark. The low bid for the construction of the Post Office was \$49,000 from a Santa Monica construction company. Construction began in June 1940, and the official dedication was in March 1941. The stone and copper cornerstone was filled with "documents of interest to future generations, copies of the St. Helena Star, and other articles pertinent to the event." The Post Office opened for business on March 17, 1941. In 1942, less than 3 months after the bombing of Pearl Harbor, concerns for heightened Civil Defense resulted in the basement of the new post office becoming a bomb shelter for persons caught downtown at the time of an air raid. Later the shelter was made into a gym for employees. The post office is a good example of a transitional style from Art Deco to Modern. Located in a shallow niche above the Postmaster's office door is a full-color mural depicting the local wine industry and its laborers. Lew Keller was the artist and the mural is a product of the Depression Era Federal Fine Arts program that was conducted between 1934 and 1943. In 1999, the local artist, Arthur Lisch, proposed that since the Keller painting depicted Anglo-European farm workers, he would paint another mural, done in a similar style, that would portray Hispanic workers picking grapes. The mural is now displayed on the opposite wall.

Stop 39

Gott's Roadside (formerly Taylor's Refresher)

933 Main Street · Built 1949



Generations of local residents and travelers have patronized the hamburger stand that Popsy Taylor first opened in St. Helena in 1949. In the early years, families could drive up to...

Generations of local residents and travelers have patronized the hamburger stand that Popsy Taylor first opened in St. Helena in 1949. In the early years, families could drive up to the hamburger stand, order and eat right in their cars. According to a press release, Virginia and her late husband, Charley Toogood, took over the restaurant in 1968 and, with other family members, operated it for the next 30 years. In 1999, Taylor's Refresher was leased to Joel and Duncan Gott, who renovated it before reopening. It is now called Gott's Roadside and is a popular eatery for both locals and visitors to St. Helena.

Stop 40

1401 Grayson Avenue

1401 Grayson Avenue



St. Helena's first high school held classes at the local Presbyterian Church for one year in 1895. In 1896, the high school moved into Turner Hall that used to be...

St. Helena's first high school held classes at the local Presbyterian Church for one year in 1895. In 1896, the high school moved into Turner Hall that used to be at Lyman Park in the center of town. Classes were held there until 1912. Work began on a new high school in 1912 with money from the 1911 school bonds and on land donated by Frances Grayson Crane. The school was built of reinforced concrete, faced with stone and roofed with slate. Students attended classes there until 1967. More modern structures on the same property now house the student body. The old school building, on the corner of Highway 29 and Grayson Avenue, underwent a major earthquake retrofit in 2003. It is now used for administration and city government meetings. The school was placed on the National Register of Historic Places on May 22, 1978.

Stop 41

Farmstead at Long Meadow Ranch (formerly James and Unity Logan Home)

738 Main Street · Built 1875



“J. T. Logan is laying out a street 60 feet wide. He has already built three cottages,” reported the St. Helena Star in 1875 about Charter Oak Avenue. That year,...

“J. T. Logan is laying out a street 60 feet wide. He has already built three cottages,” reported the St. Helena Star in 1875 about Charter Oak Avenue. That year, Logan built his home at the corner of Main Street and Charter Oak Avenue. The home is now The Farmstead General Store and Cafe and is part of The Farmstead restaurant operation located south of downtown.

Stop 42

1050 Charter Oak

1050 Charter Oak



In 1878, John Ramos and Frank Sciaroni operated Napa Valley's 2nd Sherry facility. Sciaroni's Winery and Distillery dominated the intersection of Charter Oak and Main Street in the 1880's. This...

In 1878, John Ramos and Frank Sciaroni operated Napa Valley's 2nd Sherry facility. Sciaroni's Winery and Distillery dominated the intersection of Charter Oak and Main Street in the 1880's. This square 2-story building of fieldstone is beautifully detailed with cut-stone quoins (masonry blocks at the corner of a wall), window and door trim. Note the semi-circular arched windows with radiating quoins on the first floor and plain cut-stone molding with corbels (a type of bracket used for structural support) on the second floor. The segmental-arched doorway indicates the extreme width of the walls. For many years, Sciaroni's Sherry facility has been a popular space for restaurants. Charter Oak remains an unusually intact neighborhood of mid-19th-century cottages that reflect the character of this early neighborhood of St. Helena. The Charter Oak Restaurant now occupies the property. Train wreck of 1902 1902 Train Wreck in St. Helena "For the first time in the history of St. Helena the people have seen a train wrecked within the town limits and the trouble was all caused by a gentle milch cow having no grudge whatever at the Southern Pacific Company. Monday morning at 10:25, as the northbound passenger train was steaming into town, a cow, browsing behind a clump of trees and out of sight of the engineer, ran onto the track in front of the train. There was not time to stop, as the animal was only a few yards ahead of the train, so the engineer opened the throttle in hopes of increasing the speed to a rate sufficient to knock the cow off the track." (St. Helena Star, Nov. 11, 1902). Unfortunately, the distance was too short and the cow was thrown under the train, eventually causing Engine #1309 to come off the track at the crossing of Charter Oak and land in the Sciaroni cellar yard, uprooting a tree, damaging the tender and mail car, and injuring several train employees. No passengers were hurt, nor did they even realize why the train had stopped or that the disaster had occurred. Notice Sciaroni's Sherry Building in the back of the photo. 1050 Charter Oak St Helena CA

Stop 43

835 Charter Oak Avenue

835 Charter Oak Avenue



835 Charter Oak Olive groves can still be found in Napa Valley, reflecting a period when there were several olive oil manufactories in the county in the 19th and early...

835 Charter Oak Olive groves can still be found in Napa Valley, reflecting a period when there were several olive oil manufactories in the county in the 19th and early 20th centuries. In addition to the California Olive Oil Manufacturing Company, once operated by David Martinelli on the west side of Railroad Avenue, there were also many similar factories or olive press houses set up like this one in a backyard barn, built by John Allison in the 19th century. The Napa Valley Olive Oil Manufacturing Company is a small Italian grocery, hidden away on a quiet neighborhood street. Allison Avenue, once known as Bridge Street, linked the neighborhood with Pope Street and the bridges over Sulphur Creek and the Napa River. The grocery has been owned and operated by the same family since G. Guidi began the business in the 1930's. It was owned by the Lucchesi and Particelli families in the 1960's and 1970's. The grocery sells a wide variety of specialty foods and olive oils. Within the 1½ story gable roof barn, the olive press, active since the turn of the century, is still visible, although it is not in use now. The frame structure has board and batten siding with shiplap siding in the gable end. Double doors are in the gable end also. Windows have plain molding. The upper windows in the gable end are a later addition, as is the side lean-to. 835 Charter Oak Avenue St. Helena CA

Stop 44

1216 Church Street

1216 Church Street • Built 1878



In 1875, when the St. Helena Viticultural Society was organized, the founders and officers decided they needed a warehouse for the purpose of storing grape brandy in bond. This Special...

In 1875, when the St. Helena Viticultural Society was organized, the founders and officers decided they needed a warehouse for the purpose of storing grape brandy in bond. This Special Internal Revenue Bonded Warehouse was built in 1878. A bonded warehouse is a building or other secured area in which dutiable goods may be stored, manipulated, or undergo manufacturing operations without payment of duty. This building is the earliest of several 19th century commercial stone warehouses built adjacent to the railroad tracks. Constructed in three separate sections at different times, the southern-most section was built in 1878. The central section was added in 1881 and the last section in 1889. The architectural features were kept constant throughout the warehouse's gradual development. State Farm Insurance, 55 Degrees Napa Valley Premiere Wine Storage, and Loomis Industries each occupy one of the three sections. The warehouse was placed on the National Register of Historic Places on October 5, 1995.

Stop 45

1327 Railroad Avenue

1327 Railroad Avenue · Built 1875



This stuccoed building was built in 1875. It has two sections that form an L-shaped plan. In 1886, called the U.S. Saloon, it offered both lodging and a bowling alley....

This stuccoed building was built in 1875. It has two sections that form an L-shaped plan. In 1886, called the U.S. Saloon, it offered both lodging and a bowling alley. By 1899, it had become the Roma Hotel. By 1910, the name had changed to the Miramonte Hotel. In 1922, the owner was Angelica Maliani. In 1947, Basilio Lucchesi owned the restaurant/ hotel. In 1993, Grant Showley took ownership. This building has been a restaurant for many years. Until mid-2018, Cindy's Backstreet Kitchen occupied the building, but it is now owned by Joel Gott of Gott's Roadside.

Stop 46**1345 Railroad Avenue**

1345 Railroad Avenue · Built 1884



The Taylor, Duckworth & Company Foundry Building was built in 1884 to accommodate its foundry and machine works, with a specialty in the winepresses so important to this viticultural region...

The Taylor, Duckworth & Company Foundry Building was built in 1884 to accommodate its foundry and machine works, with a specialty in the winepresses so important to this viticultural region. It is one of several commercial warehouse buildings constructed along Railroad Avenue in the 1880's, convenient to the Southern Pacific Railroad yard for loading and unloading. The buildings comprise a unique 19th century warehouse district whose buildings have been converted to a variety of modern commercial uses. In 1890, Duckworth converted the building to the St. Helena Electric Light and Power Company, but the business failed. Labor unrest in the 1880's and 1890's in San Francisco forced Earl Raymond to move his leather glove factory to Napa and Petaluma and he also established another factory in this building. In 1930, Major Gardner had a chicken hatchery here and the building was called The Hatchery for many years after. In 1969, the upper floor of the Hatchery Building became the Silverado Museum devoted to the published works, original materials, and memorabilia of Robert Louis Stevenson. At street level was "La Belle Helene" Restaurant with offices upstairs. The R.L.S. Museum has been relocated to a building adjacent to the public library on Library Lane. The Hatchery, at one time, also housed a tearoom and The Hatchery Art Gallery. This building was placed on the National Register of Historic Places on January 21, 1982.

Stop 47**Scout Hall, Railroad Avenue**

Scout Hall, Railroad Avenue



Scout Hall This simple frame false front building on Railroad Avenue, opposite the Southern Pacific Depot, appears little altered by time, giving a glimpse of how many of the 19th...

Scout Hall This simple frame false front building on Railroad Avenue, opposite the Southern Pacific Depot, appears little altered by time, giving a glimpse of how many of the 19th and early 20th century false front buildings once appeared before receiving the stucco facades of the 1930's. It was originally built for the California Olive Oil Factory and was used by David B. Martinelli until, in 1912, he sold it to William Smith, owner of the early Smith's Pharmacy, Nellie Smith, widow of William Smith, deeded the building to the City of St. Helena in 1936, for use by the Boy Scouts. Today both the Boys Scouts and Girl Scouts of St. Helena hold their meetings here. Every time the building is repainted, Martinelli's name and the name of the olive oil company are repainted. Jon Dodge carefully repaints the Boy Scouts of America symbol. The plain false front with shiplap siding conceals a rectangular building with a gable roof. One and a half stories in height, windows are in the gable and facing the street. Windows are paired with double-hung sashes and the double door, centrally located, appears original with its upper glass panels. The Boy Scout Hall is one of a cluster of 19th-century residential, industrial and warehouse buildings remaining on Railroad Avenue once closely tied in with the railroad traffic. scout hall, st helena ca

Stop 48

1500 Railroad Avenue

1500 Railroad Avenue



The first depot in St. Helena was that of the Napa Valley Railroad arriving in the town in 1868. It was located at the corner of Railroad Avenue and Hunt...

The first depot in St. Helena was that of the Napa Valley Railroad arriving in the town in 1868. It was located at the corner of Railroad Avenue and Hunt Avenue and it served both passenger and freight traffic. By 1886, financial problems led to the sale of the Napa Valley Railroad to the Southern Pacific Railroad Company. Southern Pacific became a major economic force in the Napa Valley and made it possible to ship agricultural products more easily from the northern and central sections of Napa County, which were remote from the Napa river traffic further south. The Southern Pacific Railroad built a new depot at the present location in the late 1880's. It was built in 19th Century Victorian style, characteristic of Southern Pacific Depots, with a two-story main building and a long one-story enclosed waiting and baggage area. This depot is painted in the typical Southern Pacific shade of yellow. The location of the railroad tracks and depot resulted in the building of several of St. Helena's fine stone warehouse buildings in this district. On August 7, 1959, filming began in St. Helena for the Walt Disney classic, Pollyanna, starring Haley Mills, and the St. Helena Depot was one of the sites used in the movie. The depot is now used for professional offices and medical offices for the St. Helena Hospital. The St. Helena Train Depot was placed on the National Register of Historic Places on January 7, 1997.

Stop 49

1468 Railroad Avenue

1468 Railroad Avenue



This map from 1945 shows the Sherry House (blue) and the Depot Saloon (red) with the middle structure joining the two. Blue denotes a stone structure and red denotes a...

This map from 1945 shows the Sherry House (blue) and the Depot Saloon (red) with the middle structure joining the two. Blue denotes a stone structure and red denotes a wooden structure. In 1877, at the height of the early boom times for the California wine industry, pioneering Sherry-maker John Ramos built his Sherry Factory. Ramos was an immigrant from Madeira, Portugal, where phylloxera (a plant louse that is a pest of vines) had ruined the winemaking island in the mid-1800's. Ramos first worked in Napa but traveled up to St Helena to work with wine pioneer Dr. Crane in the mid to late 1870's. Ramos built the Sherry House with the full intention of developing a new world Sherry style, different than his homeland Madeira style. The Ramos Sherry House is a two-story stone building, rectangular in shape with a hip roof. The massive walls reflect its original use as a Sherry facility with the Sherry baking ovens on the second floor. Inside the building, the bending of the floor joists are from the weight they once carried when Sherry was baked in large, heavy containers on the upper level. Now the Ramos Sherry House is private offices. Like many wineries and commercial buildings built in St. Helena during the late 19th century and early 20th century, the Ramos Sherry House was built with huge hillside timbers, stone aggregate mortar and native, quarried stone, also known as trachytic tuff. This type of tuff is a remnant of the valley's volcanic history. The locally mined stone was relatively inexpensive, fire resistant and had good insulating properties, a benefit in the winemaking process. A porch was added later. A newer middle structure joins the building with the former Johnson's Depot Saloon. John Ramos initiated the Sherry Cellar now called "The Sherry House". Later, Frank Sciaroni became a partner and both became involved with the well-known viticultural pioneer, Dr. George Belden Crane. In 1880, Frank Sciaroni established his own Sherry factory on the corner of Main and Charter Oak Avenues, south of the main commercial district of St. Helena. The Sherry Building on Railroad Avenue had convenient access to the railroad yard for loading and unloading, as well as to the major warehouses in the area for storage. Several offices now occupy the building. The Sherry Building, along with the Depot Saloon, was placed on the National Register of Historic Places on August 30, 2007.

Stop 50**1104 Adams Street**

1104 Adams Street · Built 1906



The Pritchard Building, built in 1906, was constructed, as were most of the stone buildings along Railroad Avenue, as a utilitarian warehouse convenient to the Railroad Depot. It stored coal...

The Pritchard Building, built in 1906, was constructed, as were most of the stone buildings along Railroad Avenue, as a utilitarian warehouse convenient to the Railroad Depot. It stored coal for the railroad and also served as a feed mill. It is constructed of native cut stone and fieldstone. The building is rectangular in shape without ornamentation. The original window and door openings are rectangular, have plain lugsills, and flat lintels with radiating stones. The ease of building with stone in Napa County made it economically feasible to build even simple warehouse of stone. At one time the upper level of the feed mill/warehouse was a roller skating rink. The building received an award of merit for its renovation done in 1971. During the renovation, a water tank was discovered in the northeast corner of the building and three water cisterns were also uncovered inside the building. The building is now divided into smaller offices and businesses including St. Helena Optometry